



## Jacquard Point, 5 Tapestry Way

, London E1 2FQ

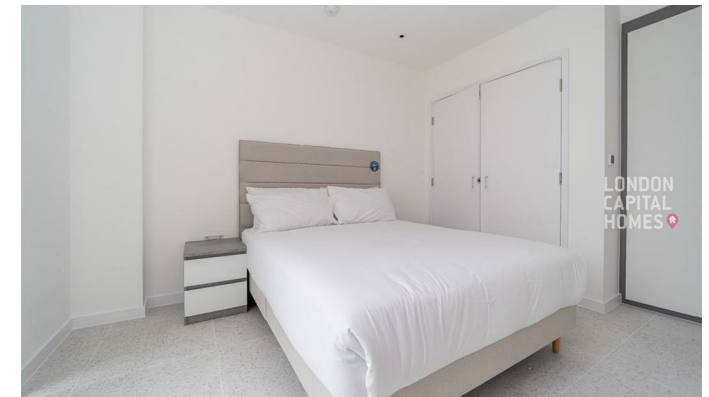
- 24-Hour Concierge
- Close to Whitechapel Station
- EPC-B
- Gym
- Cinema Room
- CTB-D

**£2,350 PCM**



Local Authority **Tower Hamlets**  
Council Tax Band **D**  
EPC Rating **B**

**JACQUARD POINT, THE SILK DISTRICT**  
APPROXIMATE GROSS INTERNAL FLOOR AREA 433 SQ.FT (40.2 SQ.M)



**London Office Office**

Spaces Victoria, 25 Wilton Road, Pimlico,  
London, SW1V 1LW

**Contact**

020 3084 3094  
XL@londonvictoriagroups.co.uk  
www.londonvictoriagroups.co.uk

Agents Note: Whilst every care has been taken to prepare these particulars, they are for guidance purposes only. All measurements are approximate and for general guidance purposes only and whilst every care has been taken to ensure accuracy, they should not be relied upon and potential buyers/tenants are advised to recheck the measurements.